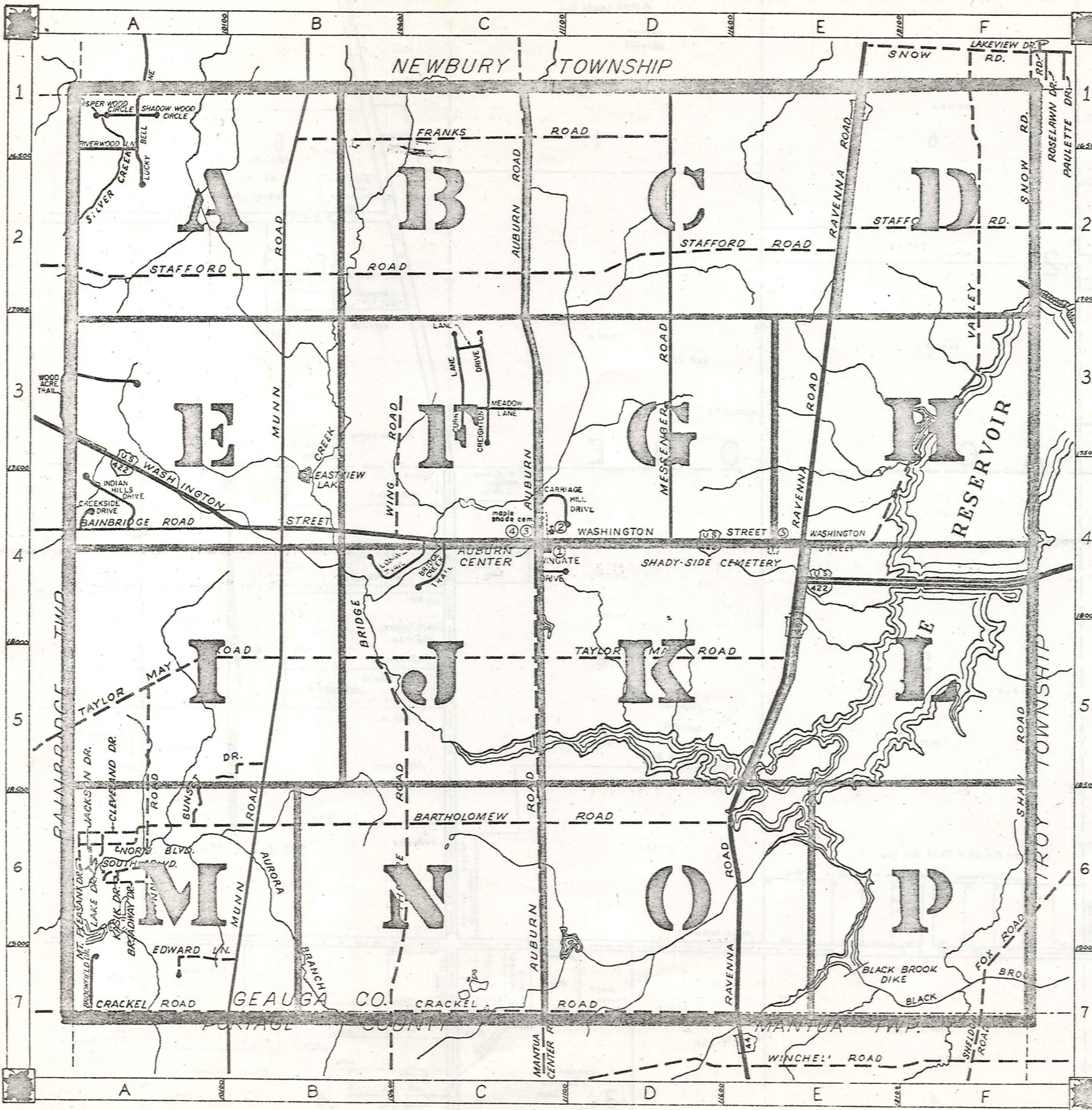


ROAD INDEX



A	AUBURN ROAD	J	CI-CI JACKSON DRIVE	S	AG SHAW ROAD SNOW ROAD SOUTH BLVD. STAFFORD RD. SUNSET DRIVE SHADOW WOOD CIRCLE A1	F4-F6 F1-F2 A6 A2-E2 B5-A6
B	BAINBRIDGE ROAD BARTHOLOMEW RD. BROADWAY DRIVE BROOKFIELD DRIVE B-IDGE CREEK TR.	K	A4 KASIK DRIVE A6 A7 C4	L	A6 LAKE DRIVE A1 LUCKY BELL LN C4 LONGVIEW TR.	A6 A1 C3
C	CLEVELAND DRIVE CRACKEL ROAD CREIGHTON DR CURRY LN CREEKSIDE DR. CARRIAGE HILL	M	A6 A7-E7 C3 C3 A4 D3	N	E1-D4 MESSENGER RD. A6 MT. PLEASANT DR. B1-B7 MUNN RD. C3 MEADOW LN.	E1-D4 A6 B1-B7 C3
D		O		P		
E	EDWARD LANE	Q		R	A6 NORTH BLVD. A6 WASHINGTON ST. C3-C4 WING ROAD A1 WHISPER WOOD CIRCLE A1 A3 WOOD ACRE TR. C2 WINGATE DRIVE	A6 A3-E4 C3-C4 A1 A3 C2
F	FOX ROAD FRANKS ROAD	X	F6-F7 B1-D1	Y		
G		Z				
H						
I	INDIAN HILLS DR.		A4			

- ① AUBURN ELEM. SCHOOL
- ② AUBURN COMMUNITY CHURCH
- ③ AUBURN TOWN HALL
- ④ AUBURN VOL. FIRE DEPT.
- ⑤ STATE HIGHWAY GARAGE (SUB-STATION)

AUBURN TOWNSHIP

SCALE: 1" = 2000'

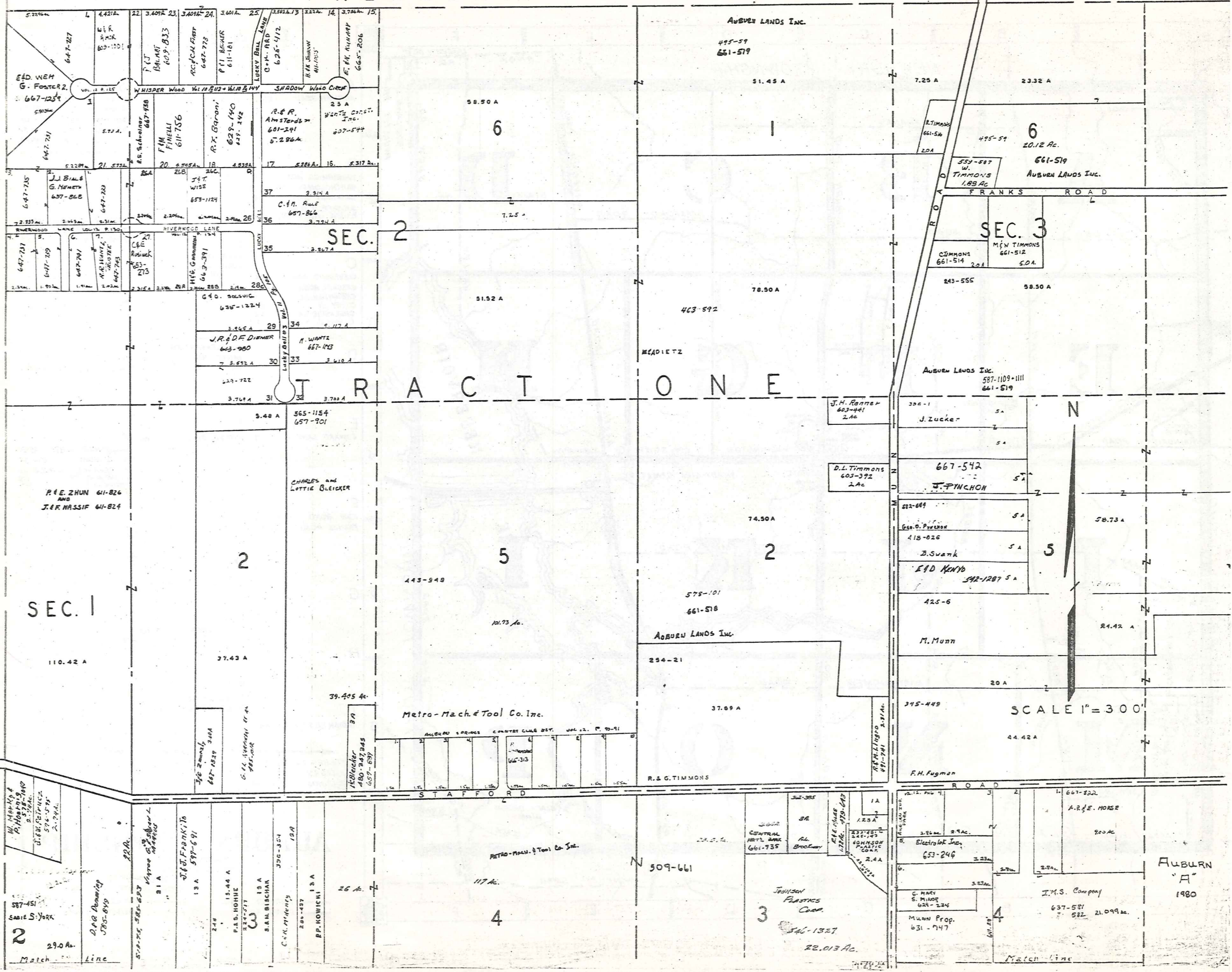
O.J. ROBINSON
GEAUGA COUNTY ENGINEER

- UNPAVED ROAD
- PAVED ROAD
- TOWNSHIP LINE
- COUNTY LINE



BAINBRIDGE TOWNSHIP

NEWBURY TOWNSHIP



SEC. 1

SEC. 2

SEC. 3

TRACT ONE

TRACT TWO

SCALE 1" = 300'

AUBURN 'A' 1980

587-451
SARIE S. YORK
29.0 Ac.
Match Line

D.P.R. Downing
375-649

519-75
581-693
BIA
Village of...
J.B.I. FORTKI To
13A 597-691

15.44 A
P.A.B. HOHUE
227-777

13A
S.A.M. BISCHAK

C.M. MURPHY'S
202-487

R.P. KOWIENI 13A
25 A.

Metro-Mach & Tool Co. Inc.

Metro-Mach & Tool Co. Inc.

509-661

JOHNSON
PLASTICS
COOP.
346-1327
22.013 Ac.

667-522
A.R.F. HORSE
200 Ac.

Electrolak Inc.
653-246

J.M.S. Company
637-581
582 21.099 ac.

MUNN Prop.
631-747

Match Line

F.H. Fugman

345-449

M. Munn

EAD KENYON
542-1207 5 A

J. PYNCHON

667-542

D.L. Timmons
603-392
2 Ac

J.H. Ranter
603-441
2 Ac

Auburn Lands Inc.
587-1109-1111
661-519

M.W. Timmons
661-512
5.0 A.

W. Timmons
1.85 AC

661-519
Auburn Lands Inc.

495-59
661-519

Auburn Lands Inc.

R.E. ZHUN 611-826
AND
J.E.F. MASSIF 611-824

CHARLES and
LOTTIE BLEICKER

MEADLETZ

E.D. WEM
G. FOSTER 2.
667-1254

WISPER Wood

SHADOW Wood Creek

J.J. BIALS
G. NEMETH
637-868

F.M. FINELLI
611-756

R. & R.
Amsterdam
681-241
5.286 A.

J.R. & D.F. DIEMER
643-980

H.E. Gammann
663-391

N. WARTZ
667-143

G.D. SOLVIG
635-1224

J.R. & D.F. DIEMER
643-980

Lucky Bell
667-143

3.764 A

3.764 A

3.764 A

3.48 A

3.48 A

3.48 A

37.43 A

37.43 A

37.43 A

110.42 A

110.42 A

110.42 A

39.405 Ac.

39.405 Ac.

39.405 Ac.

17.73 Ac.

17.73 Ac.

17.73 Ac.

2.90 Ac.

2.90 Ac.

2.90 Ac.

2.90 Ac.

2.90 Ac.

2.90 Ac.

2.90 Ac.

2.90 Ac.

2.90 Ac.

2.90 Ac.

2.90 Ac.

2.90 Ac.

58.50 A

7.25 A

51.52 A

3.764 A

3.48 A

101.73 Ac.

17.73 Ac.

17.73 Ac.

2.90 Ac.

6

7.25 A

51.52 A

3.764 A

3.48 A

101.73 Ac.

17.73 Ac.

17.73 Ac.

2.90 Ac.

31.45 A

7.25 A

78.50 A

3.764 A

74.50 A

575-101
661-518

37.69 A

509-661

2.90 Ac.

7.25 A

7.25 A

78.50 A

3.764 A

74.50 A

575-101
661-518

37.69 A

509-661

2.90 Ac.

7.25 A

7.25 A

78.50 A

3.764 A

74.50 A

575-101
661-518

37.69 A

509-661

2.90 Ac.

23.32 A

7.25 A

58.50 A

3.764 A

58.73 A

24.42 A

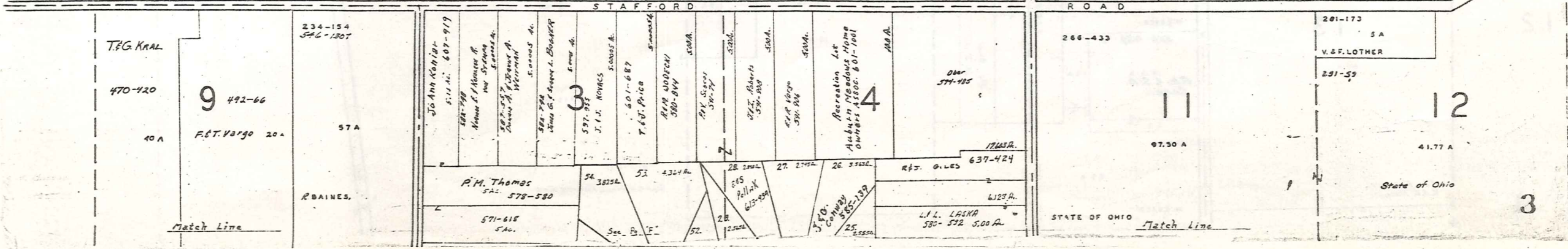
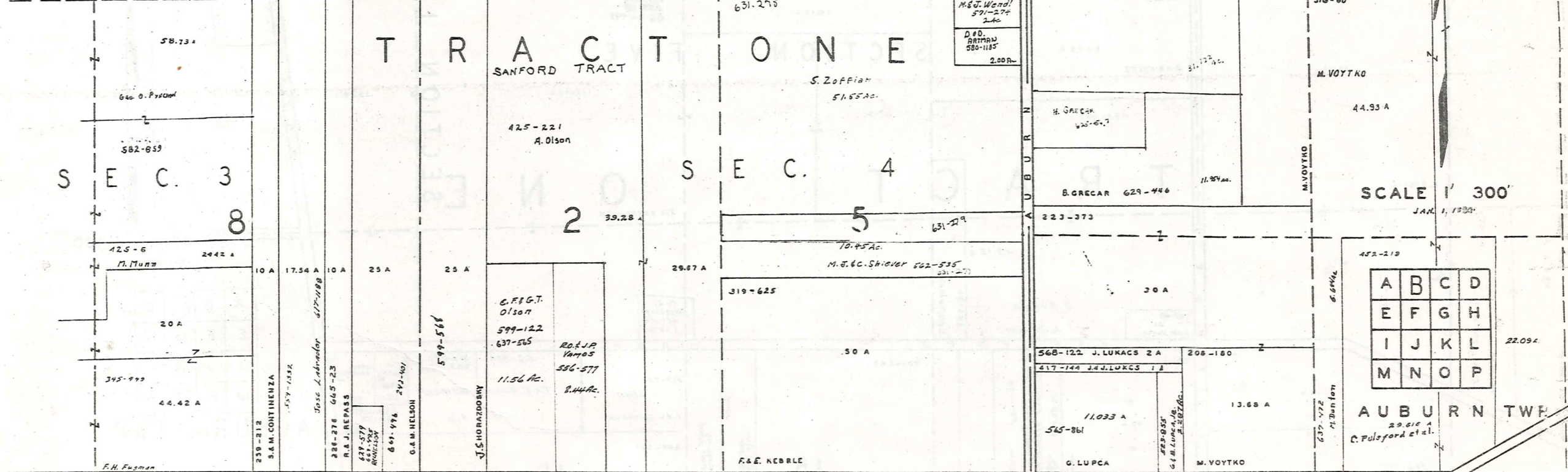
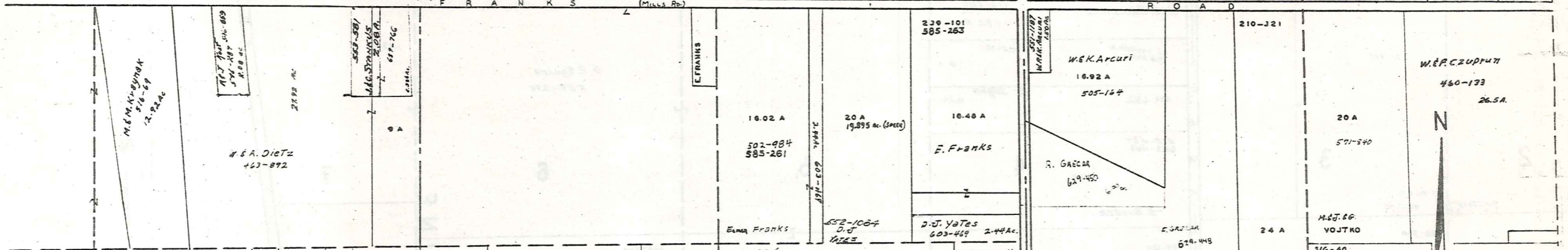
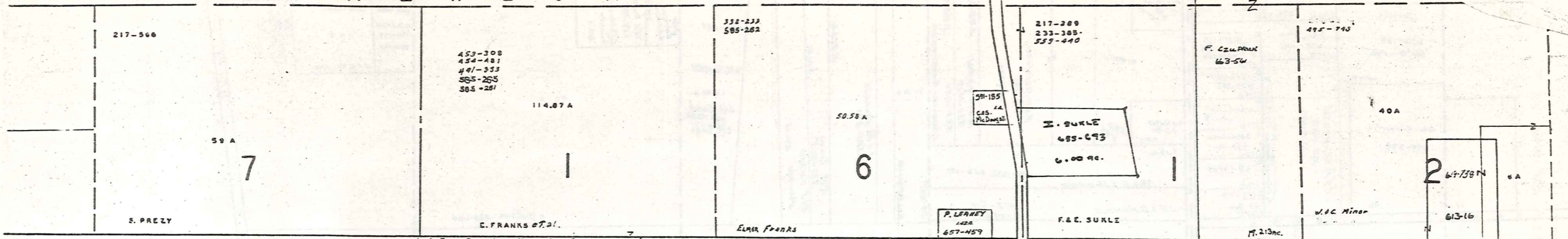
44.42 A

509-661

2.90 Ac.

NEWBURY

T W P.

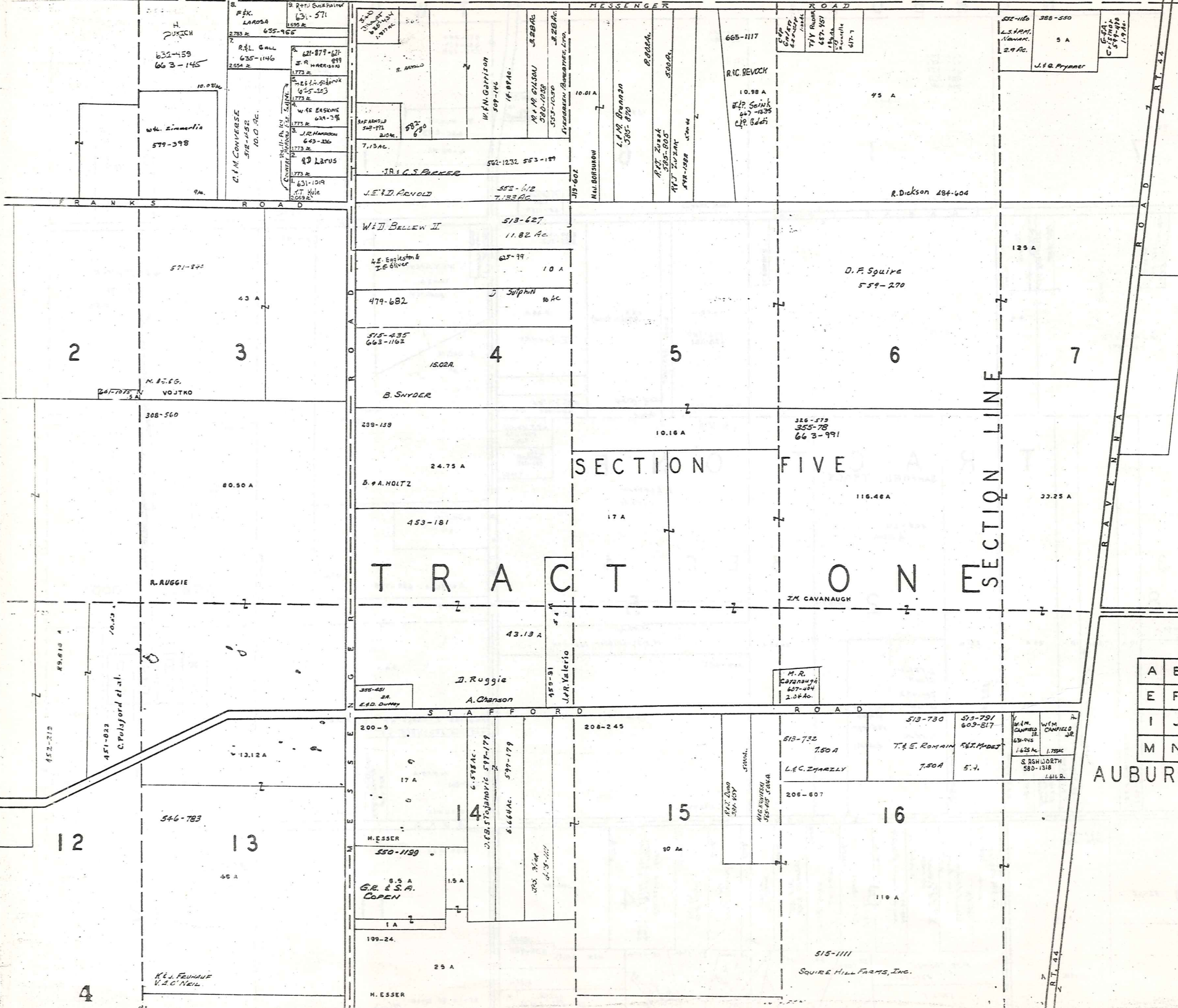


SCALE 1" = 300'
JAN. 1, 1930

A	B	C	D
E	F	G	H
I	J	K	L
M	N	O	P

AUBURN TWP.
C. Pilsford et al.

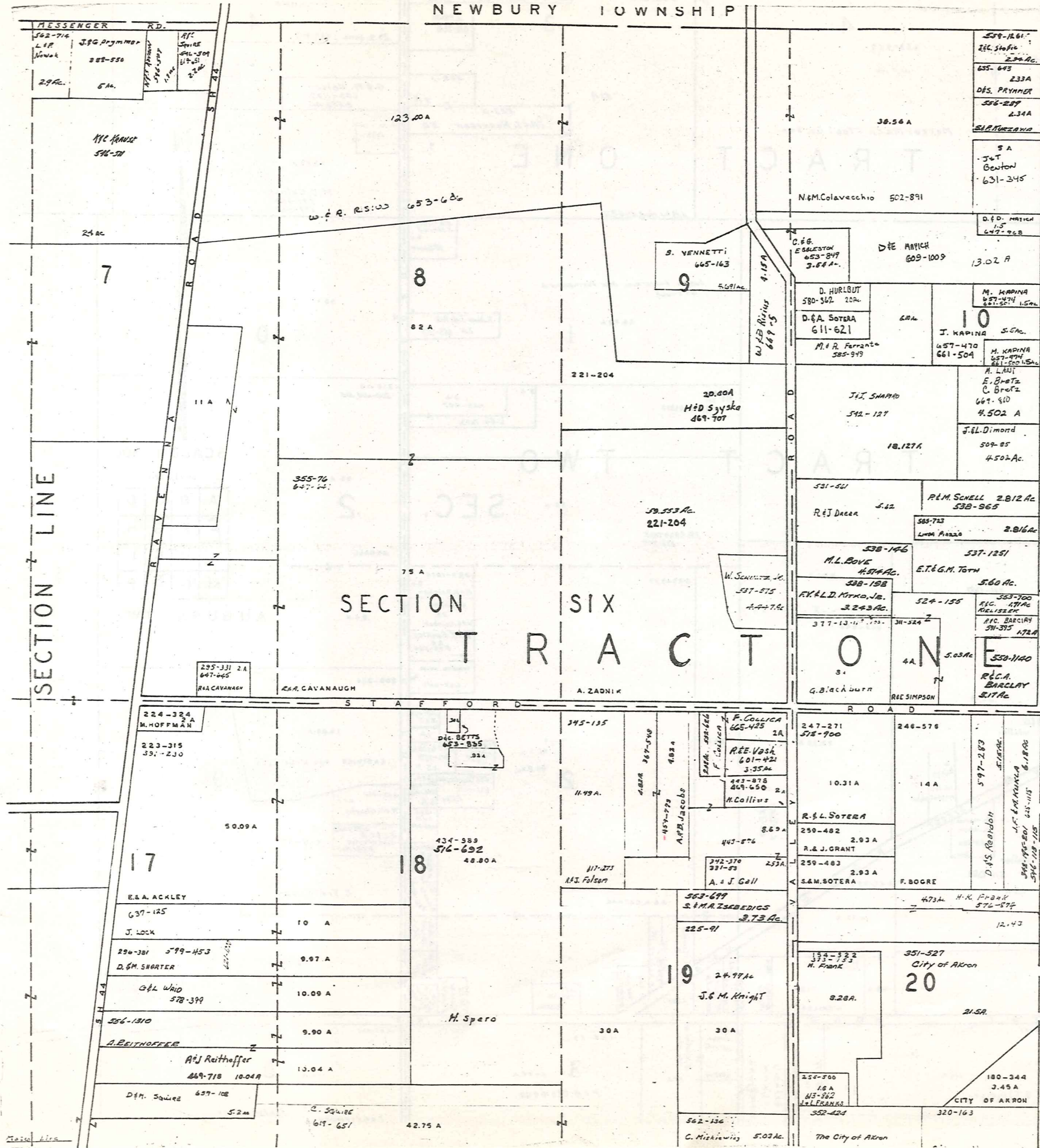
N E W B U R K I T O W N S H I P



SCALE 1 300
JAN 1, 1960

A	B	C	D
E	F	G	H
I	J	K	L
M	N	O	P

AUBURN TWP.



T R O W N S H I P

AUBURN TWP.

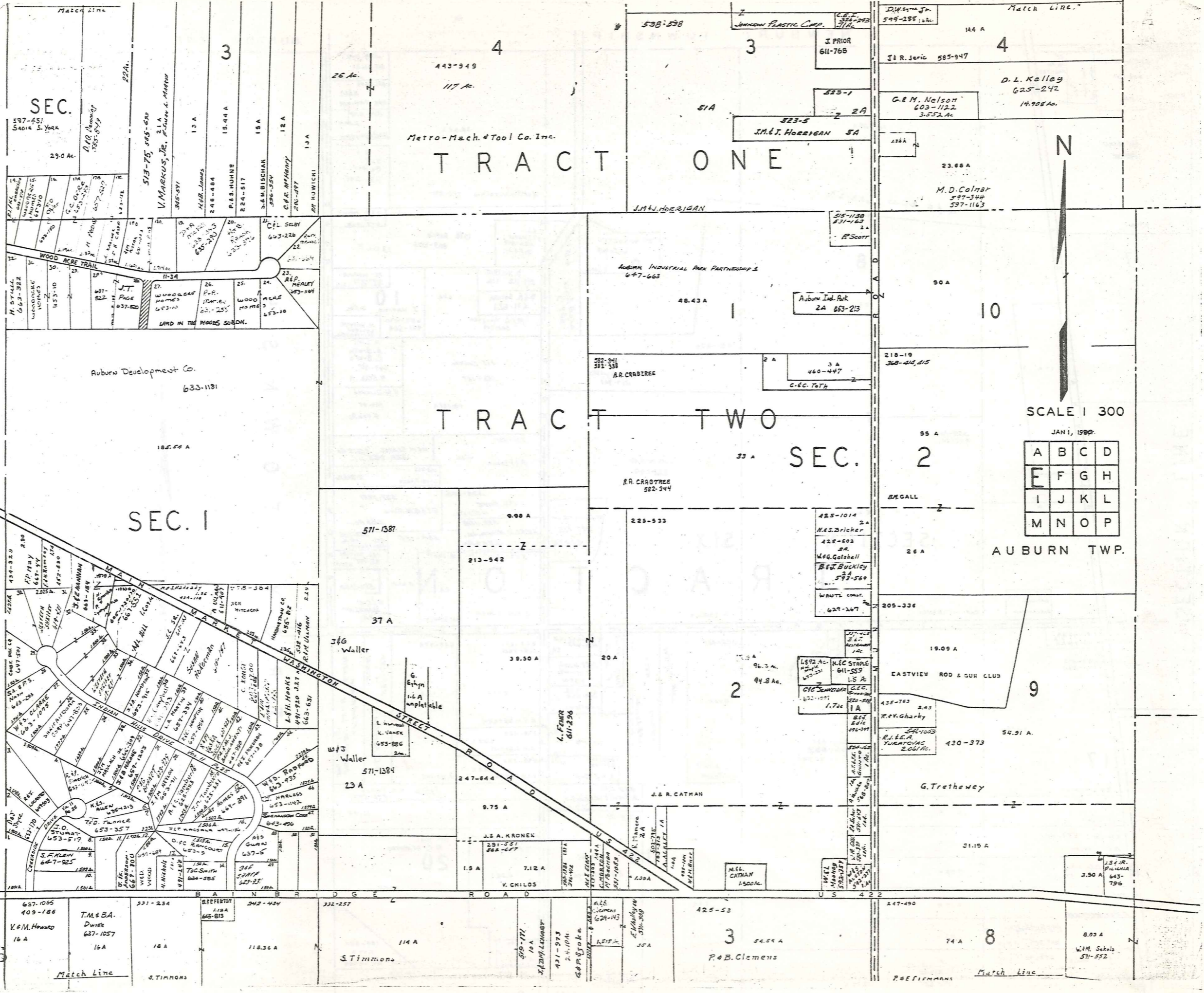


SCALE 1 300

JAN 1, 1990

A	B	C	D
E	F	G	H
I	J	K	L
M	N	O	P

BAINBRIDGE TOWNSHIP



TRACT ONE

TRACT TWO

SEC. 1

SEC. 2

SCALE 1 300

JAN 1, 1992

A	B	C	D
E	F	G	H
I	J	K	L
M	N	O	P

AUBURN TWP.



SEC.

443-949
117 Ac.

Metro-Mach. & Tool Co. Inc.

J. PRIOR
611-765

G.M. Nelson
603-1122
3.552 Ac.

D.L. Kelley
625-242
14.905 Ac.

M.D. Colmar
597-344
597-1163

Auburn Development Co.
633-1181

AUBURN INDUSTRIAL PARK PARTNERSHIP
647-663

Auburn Ind. Park
2A 653-213

A.R. CRADDOCK
582-341
581-338

C.C. TOTH
460-447

A.R. CRADDOCK
582-344

M.S. BRICKER
425-1014
2A

WAG. GOLDBELL
425-503
2A

WAG. BUCKLEY
593-569

WAG. COMPTON
629-267

N.C. STAPLE
611-559
1.5 Ac.

G.E. SANDERSON
620-1007
1.7 Ac.

BEY. EDIC
496-399

BEY. EDIC
496-399

BEY. EDIC
496-399

BEY. EDIC
496-399

BEY. EDIC
496-399

BEY. EDIC
496-399

BEY. EDIC
496-399

BEY. EDIC
496-399

BEY. EDIC
496-399

597-751
SADIE S. YORG

29.0 Ac.

D. W. DOMMERT
185-819

14.4 Ac.

14.4 Ac.

14.4 Ac.

14.4 Ac.

14.4 Ac.

14.4 Ac.

14.4 Ac.

14.4 Ac.

14.4 Ac.

14.4 Ac.

14.4 Ac.

14.4 Ac.

14.4 Ac.

14.4 Ac.

14.4 Ac.

14.4 Ac.

14.4 Ac.

14.4 Ac.

14.4 Ac.

14.4 Ac.

14.4 Ac.

14.4 Ac.

14.4 Ac.

14.4 Ac.

14.4 Ac.

14.4 Ac.

1.3 A

18.44 A

1.8 A

1.2 A

1.3 A

1.3 A

1.3 A

1.3 A

1.3 A

1.3 A

1.3 A

1.3 A

1.3 A

1.3 A

1.3 A

1.3 A

1.3 A

1.3 A

1.3 A

1.3 A

1.3 A

1.3 A

1.3 A

1.3 A

1.3 A

1.3 A

1.3 A

1.3 A

1.3 A

1.3 A

18.44 A

1.8 A

1.2 A

1.3 A

1.3 A

1.3 A

1.3 A

1.3 A

1.3 A

1.3 A

1.3 A

1.3 A

1.3 A

1.3 A

1.3 A

1.3 A

1.3 A

1.3 A

1.3 A

1.3 A

1.3 A

1.3 A

1.3 A

1.3 A

1.3 A

1.3 A

1.3 A

1.3 A

1.3 A

18.44 A

1.8 A

1.2 A

1.3 A

1.3 A

1.3 A

1.3 A

1.3 A

1.3 A

1.3 A

1.3 A

1.3 A

1.3 A

1.3 A

1.3 A

1.3 A

1.3 A

1.3 A

1.3 A

1.3 A

1.3 A

1.3 A

1.3 A

1.3 A

1.3 A

1.3 A

1.3 A

1.3 A

1.3 A

18.44 A

1.8 A

1.2 A

1.3 A

1.3 A

1.3 A

1.3 A

1.3 A

1.3 A

1.3 A

1.3 A

1.3 A

1.3 A

1.3 A

1.3 A

1.3 A

1.3 A

1.3 A

1.3 A

1.3 A

1.3 A

1.3 A

1.3 A

1.3 A

1.3 A

1.3 A

1.3 A

1.3 A

1.3 A

18.44 A

1.8 A

1.2 A

1.3 A

1.3 A

1.3 A

1.3 A

1.3 A

1.3 A

1.3 A

1.3 A

1.3 A

1.3 A

1.3 A

1.3 A

1.3 A

1.3 A

1.3 A

1.3 A

1.3 A

1.3 A

1.3 A

1.3 A

1.3 A

1.3 A

1.3 A

1.3 A

1.3 A

1.3 A

18.44 A

1.8 A

1.2 A

1.3 A

1.3 A

1.3 A

1.3 A

1.3 A

1.3 A

1.3 A

1.3 A

1.3 A

1.3 A

1.3 A

1.3 A

1.3 A

1.3 A

1.3 A

1.3 A

1.3 A

1.3 A

1.3 A

1.3 A

1.3 A

1.3 A

1.3 A

1.3 A

1.3 A

1.3 A

18.44 A

1.8 A

1.2 A

1.3 A

1.3 A

1.3 A

1.3 A

1.3 A

1.3 A

1.3 A

1.3 A

1.3 A

1.3 A

1.3 A

1.3 A

1.3 A

1.3 A

1.3 A

1.3 A

1.3 A

1.3 A

1.3 A

1.3 A

1.3 A

1.3 A

1.3 A

1.3 A

1.3 A

1.3 A

18.44 A

1.8 A

1.2 A

1.3 A

1.3 A

1.3 A

1.3 A

1.3 A

1.3 A

1.3 A

1.3 A

1.3 A

1.3 A

1.3 A

1.3 A

1.3 A

1.3 A

1.3 A

1.3 A

1.3 A

1.3 A

1.3 A

1.3 A

1.3 A

1.3 A

1.3 A

1.3 A

1.3 A

1.3 A

18.44 A

1.8 A

1.2 A

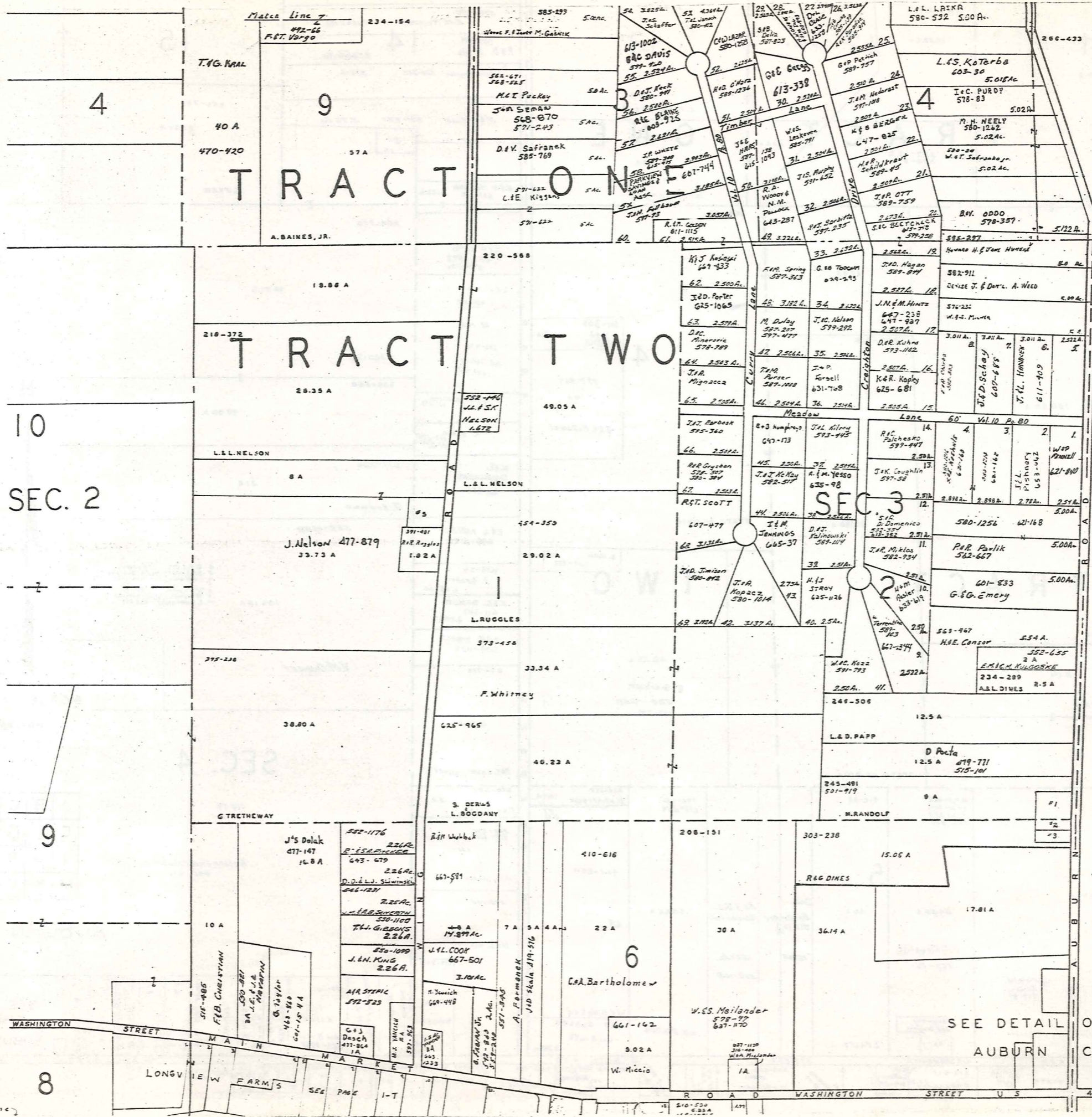
1.3 A

1.3 A

1.3 A

1.3 A

1.3 A



TRACT ONE

TRACT TWO

SEC 3



SCALE 1"=300'
JAN 1, 1980

A	B	C	D
E	F	G	H
I	J	K	L
M	N	O	P

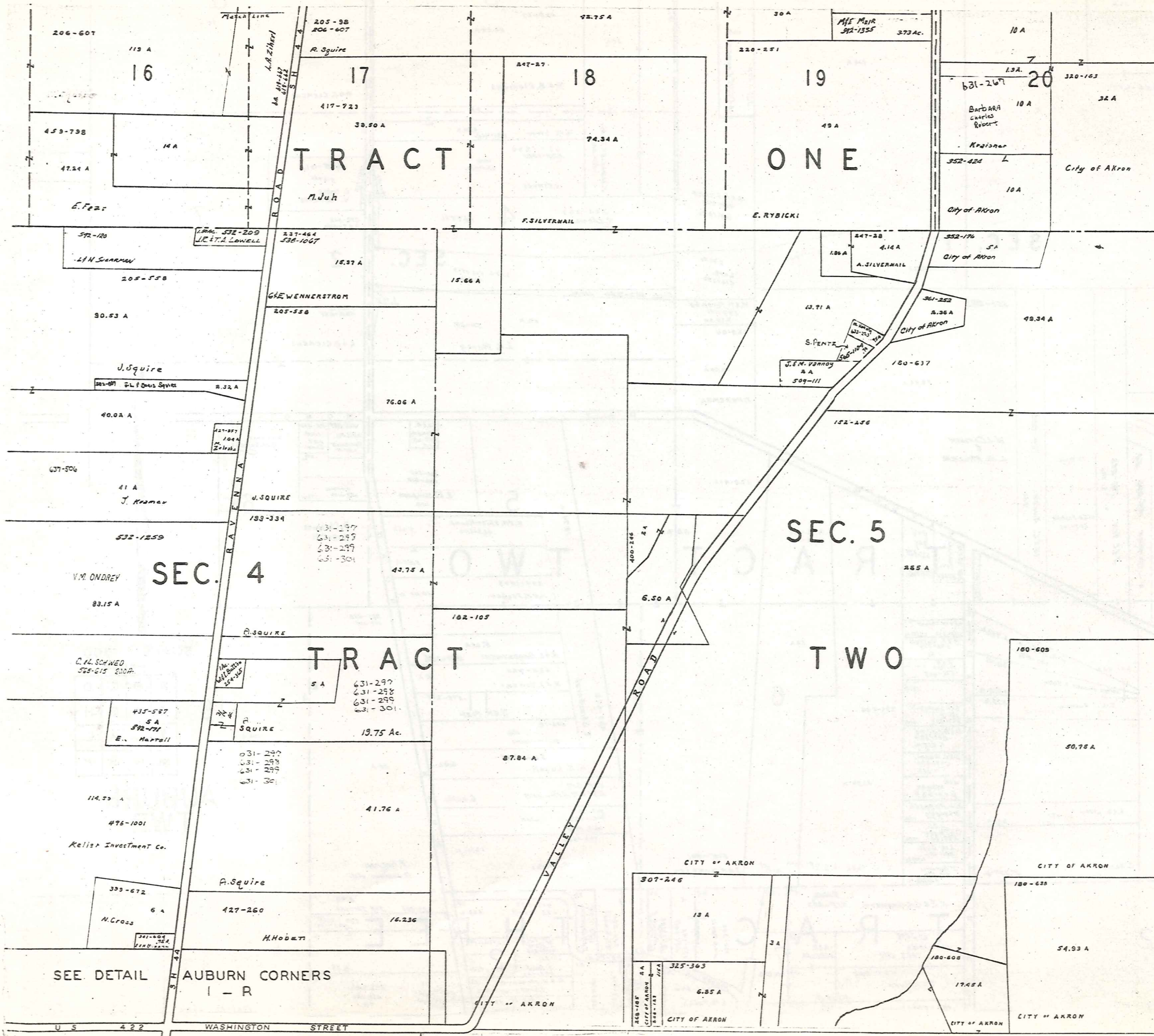
AUBURN TWP.

- 7 M. RANDOLF 237-216 1A 501-919
- 8 C. MONROE 243-414 45A
- 9 R.G. DINES 223-443 55A
- 4 M.F. VANICH 063-1233 12A
- 2 B. WHITNEY 233-123 712A
- 7 B.M. VAN DRE 303-191 1A

SEE DETAIL OF
AUBURN
CENTER

Match Line

Match Line



TROY TOWNSHIP



SCALE 1 300

JAN 1, 1937

A	B	C	D
E	F	G	H
I	J	K	L
M	N	O	P

AUBURN TWP.

SEE DETAIL AUBURN CORNERS I - R

U 5 4 2 2 WASHINGTON STREET

BAINBRIDGE TOWNSHIP

SEC. 1

SEC. 2

TRACT TWO



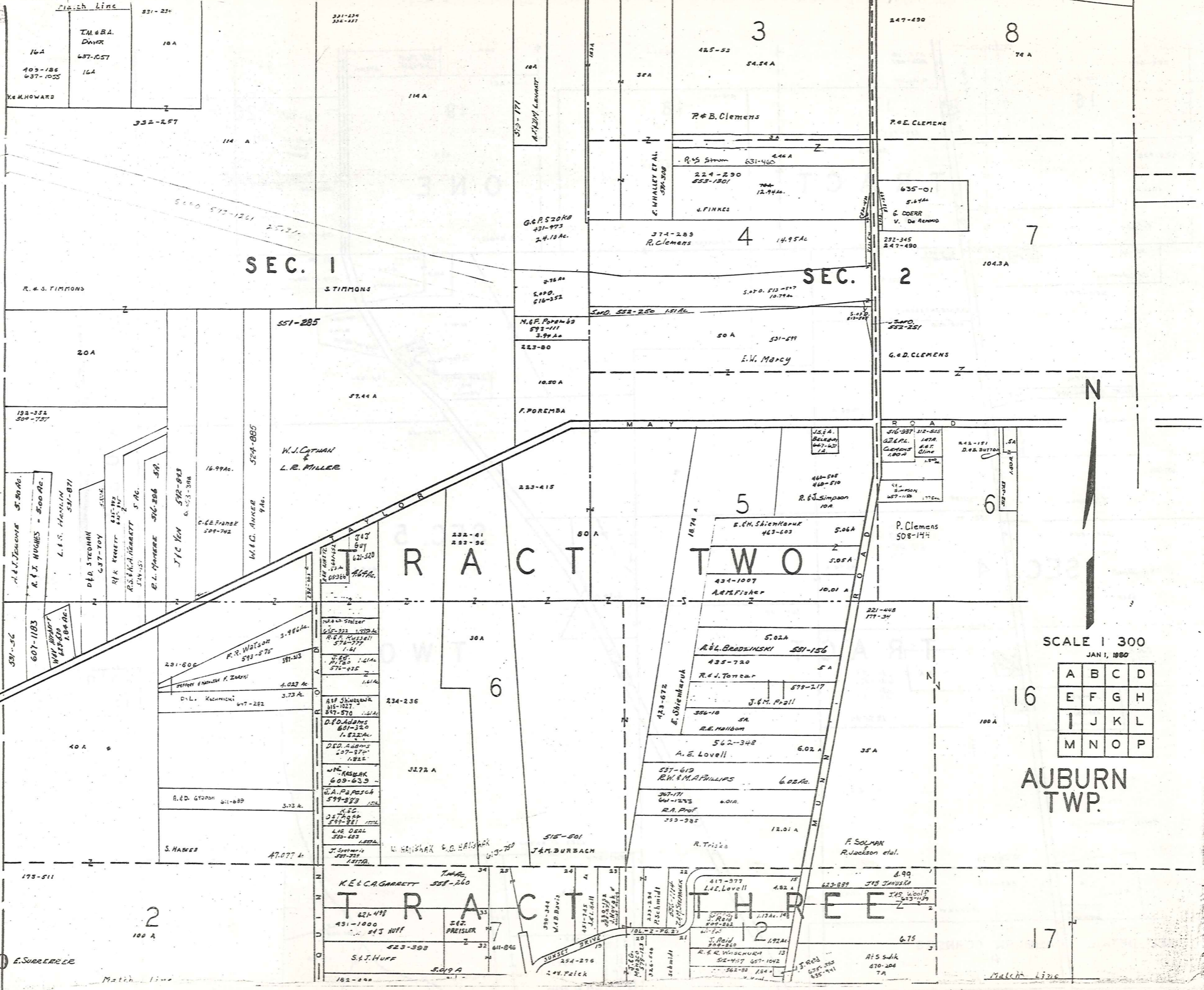
SCALE 1 300
JAN 1, 1980

A	B	C	D
E	F	G	H
I	J	K	L
M	N	O	P

AUBURN TWP.

10 E. SUBERRER

Match Line



Match Line

Match Line

74 A

LONGVIEW FARMS
SEE PG 1-T

6034
427-154

SEE DETAIL SHEET I-Q
AUBURN CENTER

8

TRACT TWO

SEC 3

7

1043A

SEC. 2

7

E. R. A. DONALD
61-4599
643-451

24.80Ac
208-109

10A

492-885
V.R.J. Chiochetti
5.85Ac.

A. BUTTON ET AL.

A. BUTTON

R. ROWBIL

37.33Ac.

663-778

8

10A

315A

ARM
ROWBIL

554A

A. DERECSKY

205-551

21.75 A

A. DERECSKY

27.60A

6

26Ac.

33.50 A

LAW MAY

595-965
242-152
S. HULL
1.425 A
643-730
F. J. SPOON
2392 A
643-730
FORSZOKA
376-504, 541
50 A

47.50 A

395-437

50 A

A. DERECSKY

221-448
173-34

351-447

TRACT THREE

403-360

16

21

26

23 A

31

35A

100 A

51.887 Ac.

46.12 Ac.

502-436

City of Akron

F. SOLMAN &
R. JACKSON ET AL.

EX. M.
BROWN

B. A. Perkins
501-177

49.13 Ac.

44.9A

607-995
520-115

E. ANDREWS ET AL.

22

50 A

27

100 A

133-56
352-426

60 A

32

G. SIMKO

N

SCALE 1"=300'

JAN 1, 1980

A	B	C	D
E	F	G	H
I	J	K	L
M	N	O	P

AUBURN TWP.

MATCH LINE

11

SEE AUBURN

DETAIL CENTER I - Q

SEE DETAIL I - R AUBURN CORNERS

5

SEC. 3

SEC. 4

TRACT TWO

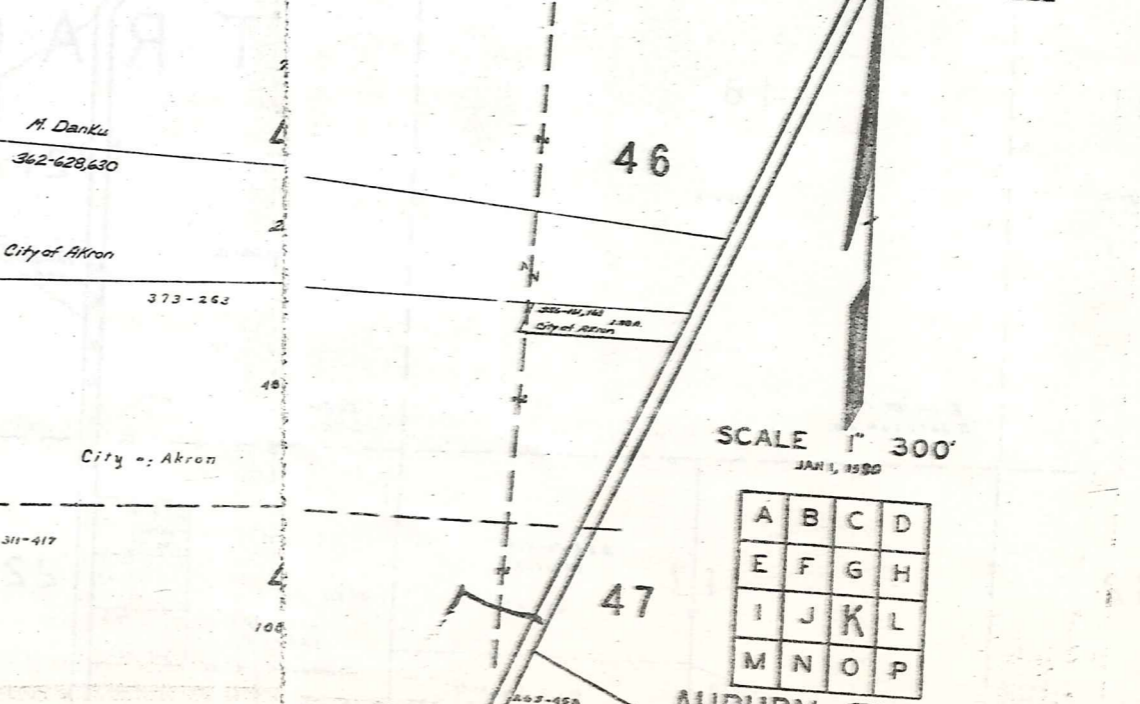
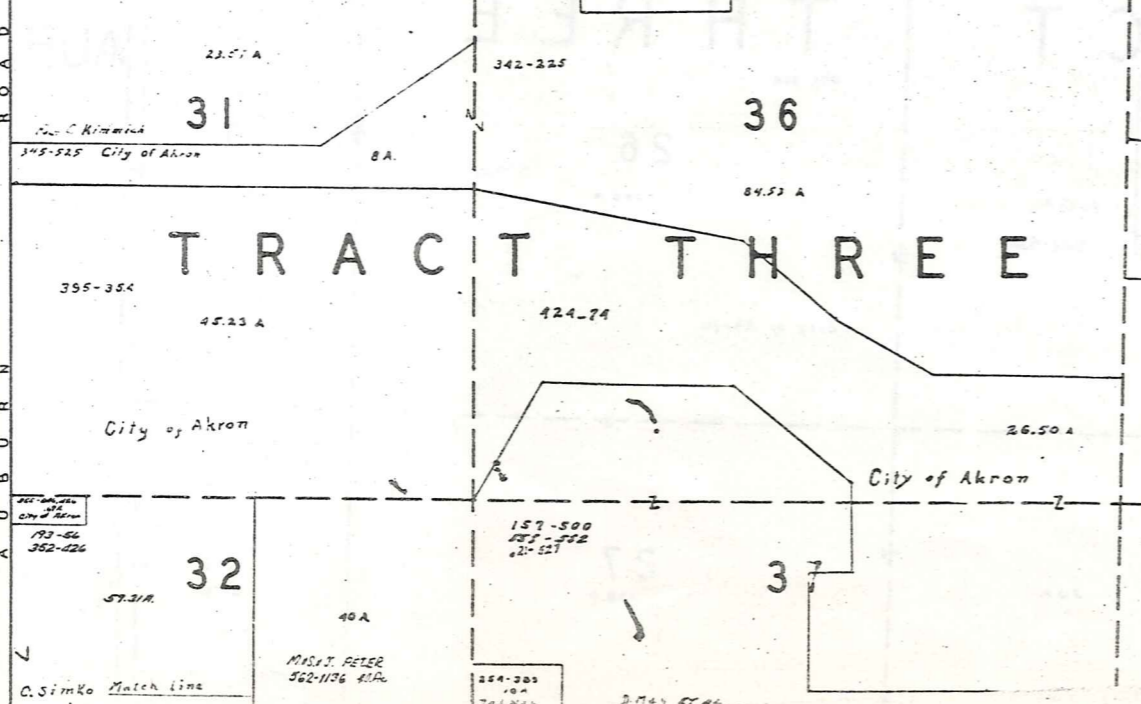
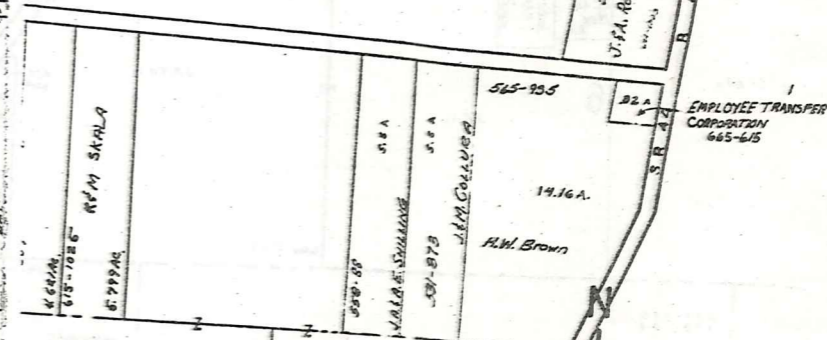
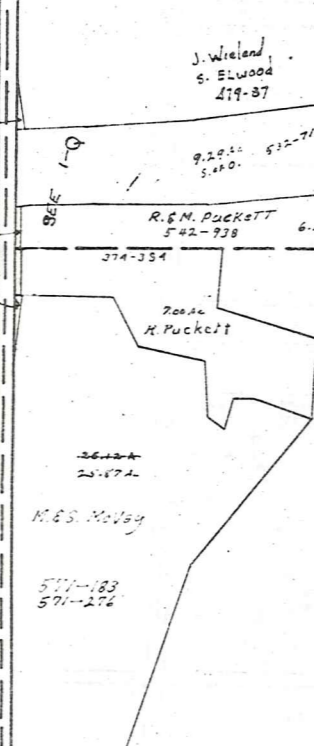
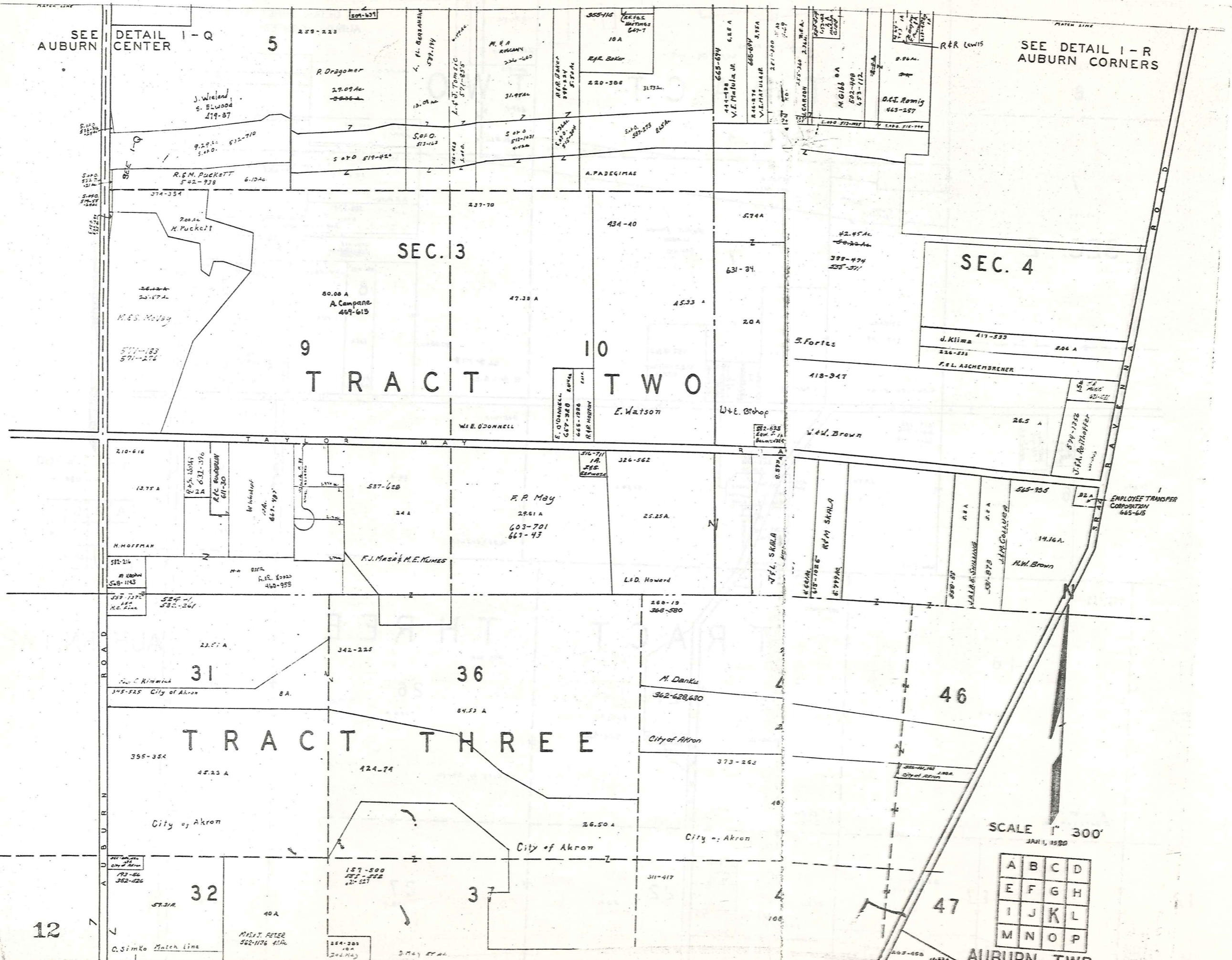
TRACT THREE

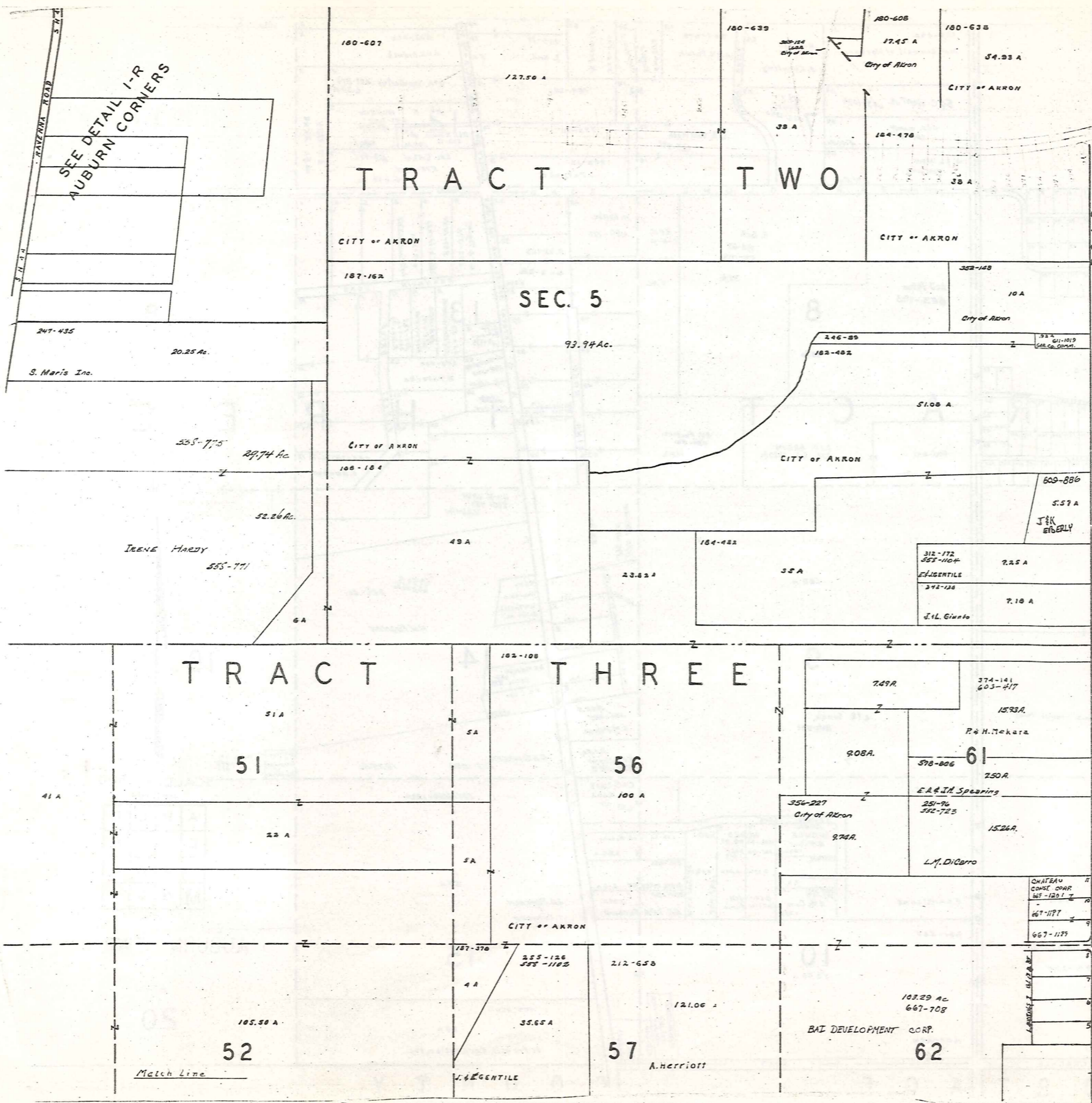
12

SCALE 1" = 300'
JAN 1, 1930

A	B	C	D
E	F	G	H
I	J	K	L
M	N	O	P

ALPHABETIC





SEE DETAIL I-R
AUBURN CORNERS

TRACT TWO

SEC. 5

TRACT THREE

TOWN SHIP
T R O Y



SCALE 1" 300'
JAN 1, 1920

A	B	C	D
E	F	G	H
I	J	K	L
M	N	O	P

AUBURN TWP.

Match Line

Match Line

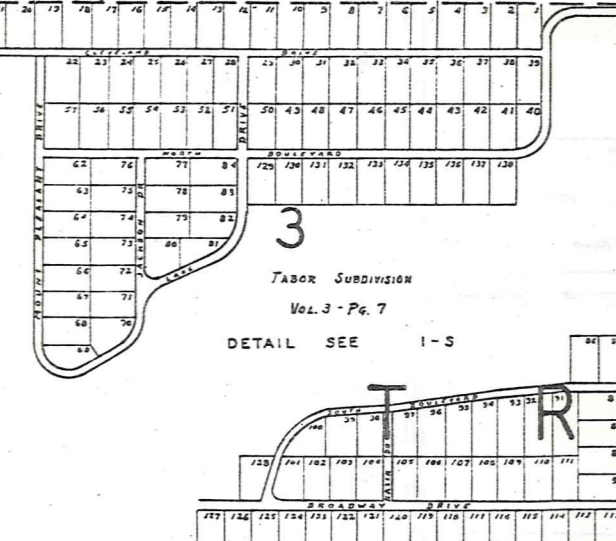
B
A
I
N
B
R
I
D
G
E
T
O
W
N
S
H
I
P

Match Line

Match Line

173-511
100 A
2
E. Surrarer

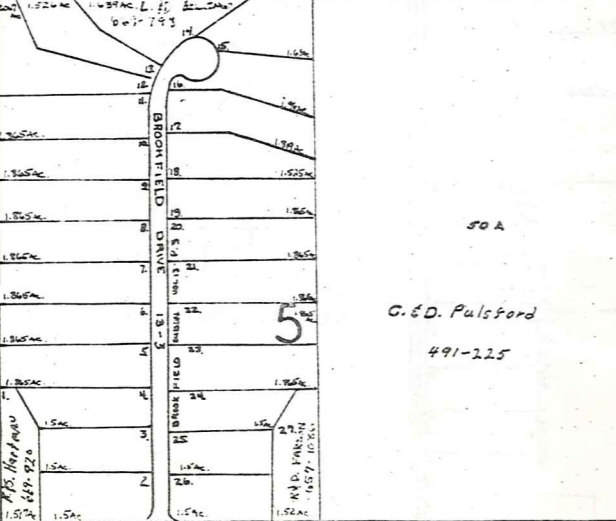
182-498
Dist. Council of Workers
213-170
233-143
E. Eberling
254-276
A. V. Palek
562-88
K. Krul
263-228
A. S. Sidnik
V. A. Vanulaitus 477-875
6.25A
F. Nicholson
491-947
657-889
D. J. Nicholson
538-74
1.85 Ac.
480 Ac.
E. L. Ethel
413-467
579-727
6.636 Ac.



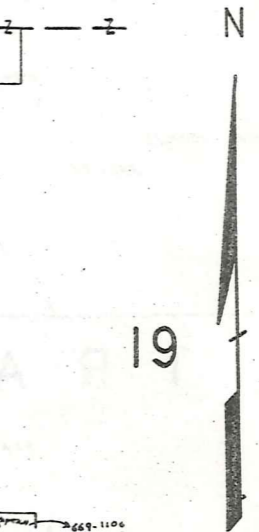
ARTHUR HOLOMEW ROAD
A. J. Piteo 653-193
30 Ac.
H. Berli 558-631
574-1214
32 Ac.
E. R. C. Ory 599-135
8 Ac.
M. Krahe 657-192
J. Keyes
L. Batchelder
662-836
G. A. Taylor
492-192
599-1048
D. B. Childress
649-972
410 Childress
R. Peterka
208-530
R. Peterka
444-76-76-73 1/8
E. Kardos
W. J. Varso
580-559
11.444 Ac.

50 A
4
J. Stoner & E. Husni (Co-trustees) of
Sinner, Husni & Associates, Inc. EMPLOYEES' PENSION TRUST
657-208

100 A
9
L. R. Souik 469-391
D. D. Braun 574-1216 11.20 Ac.
R. V. Peckett 580-510
11.8 Ac.
W. J. Varso 580-559
11.444 Ac.
J. M. Davidson 647-1212
2.001 Ac.
H. W. Fugman
69.59 Ac.
63.079 Ac.
326-301
D. E. Fugman 667-570
4.511 Ac.
A. J. Singelyn 553-1226
13.35 Ac.



263-165
E. G. A. McCune
201-564
10
56.50 A
A. Speath
EDWARD LANE
M. C. McCune
VOL. 7 PG. 27
1.93A
242-600
342-610
2.53A
2.87A
D. P. McCune
H. M. C. Curc
1.35A
304-537
M. S. McCune
E. H. McCune
3.18A
557-191
R. E. & P. A. Secura
3.03A
J. A. Papesch & H. Osthoff
557-1229-1239
13.35 Ac.
63 A
60 A
20 A
St. Francis Foundation, Inc.

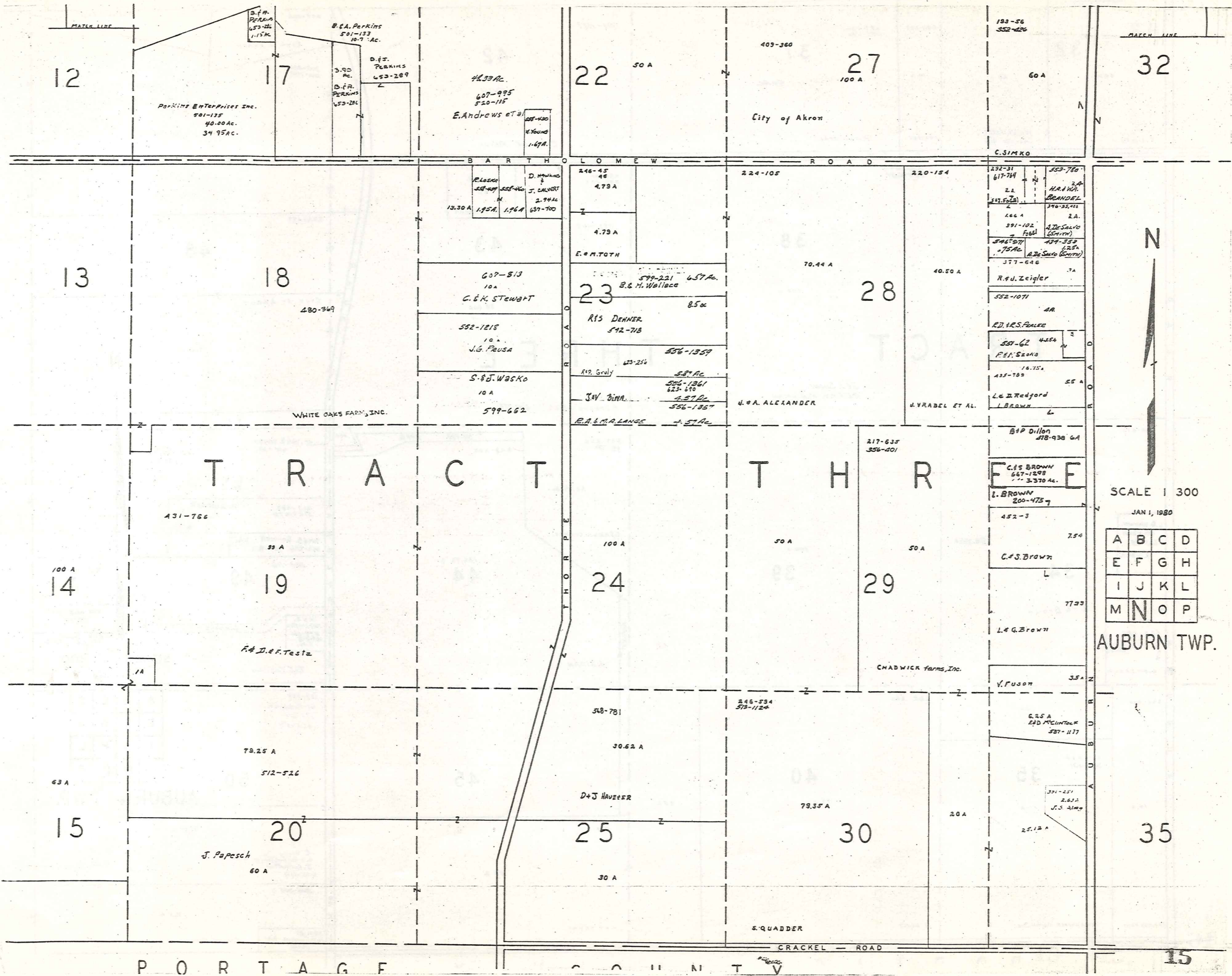


SCALE 1 300
JAN 1, 1980

A	B	C	D
E	F	G	H
I	J	K	L
M	N	O	P

AUBURN TWP.

P O R T A G E C O U N T Y



SCALE 1 300
 JAN 1, 1980

A	B	C	D
E	F	G	H
I	J	K	L
M	N	O	P

AUBURN TWP.

12

13

100 A
14

15

17

18

19

20

22

23

24

25

27

28

29

30

32

35

32

35

Perkins Enterprises Inc.
 501-135
 40.00 Ac.
 34.95 Ac.

B.S.A. Perkins
 501-133
 10.7 Ac.
 3.90 Ac.
 D.F. Perkins
 653-289
 D.F. Perkins
 653-286

42.33 Ac.
 607-995
 520-115
 E. Andrews et al.
 1.67 Ac.

R. L. Lash
 558-409
 13.30 A
 1.95 A
 D. Hawkins & J. Culvert
 2.94 Ac
 637-700

607-813
 10 A
 G.E.K. Stewart

552-1218
 10 A
 J.G. Feusa

S.J. Wasko
 10 A
 599-662

WHITE OAKS FARM, INC.

431-766

99 A

F.A.D. Testa

79.25 A
 512-526

J. Papesch
 60 A

50 A

246-45
 46
 4.79 A

4.79 A
 E.M. TOTH

599-221
 657 Ac.
 B.S.H. Wallace
 85 Ac

R.S. DENNER
 542-718

556-1359
 149 Grady
 5.87 Ac

556-1361
 623-690
 J.V. DINA
 4.57 Ac
 556-1357
 R.A. & M.A. Lange
 1.57 Ac

100 A

24

568-781

30.62 A

D.J. Haverer

25

30 A

403-360

City of Akron

224-105

70.44 A

U.A. ALEXANDER

50 A

29

246-594
 578-1124

79.35 A

S. QUADDER

CRACKEL ROAD

27

100 A

220-154

40.50 A

H. VRABEL ET AL.

50 A

29

CHADWICK farms, Inc.

20 A

193-56
 352-426

60 A

C. SIMKO

292-31
 617-744
 2 A
 543-603
 2
 166 A
 591-102
 F. B. B. (Smith)
 546-577
 75 Ac
 377-646

553-760
 2 A
 H.A. WA.
 BRANDEL
 396-35,411
 2 A
 A. De Salvo (Smith)
 434-359
 125 A
 A. De Salvo (Smith)
 R.A.J. Zeigler

552-1071
 4 A
 R.D. R.S. PALACE

557-62
 4.54 A
 P.E. Szabo
 16.75 A
 435-789
 55 A

L.E. Redford
 I. BROWN

B.P. Dillon
 478-938 6 A

C.S. BROWN
 667-1298
 3.370 Ac.

L. BROWN
 200-473
 452-3

75 A
 C.F.S. Brown

77.39

L.E. G. Brown

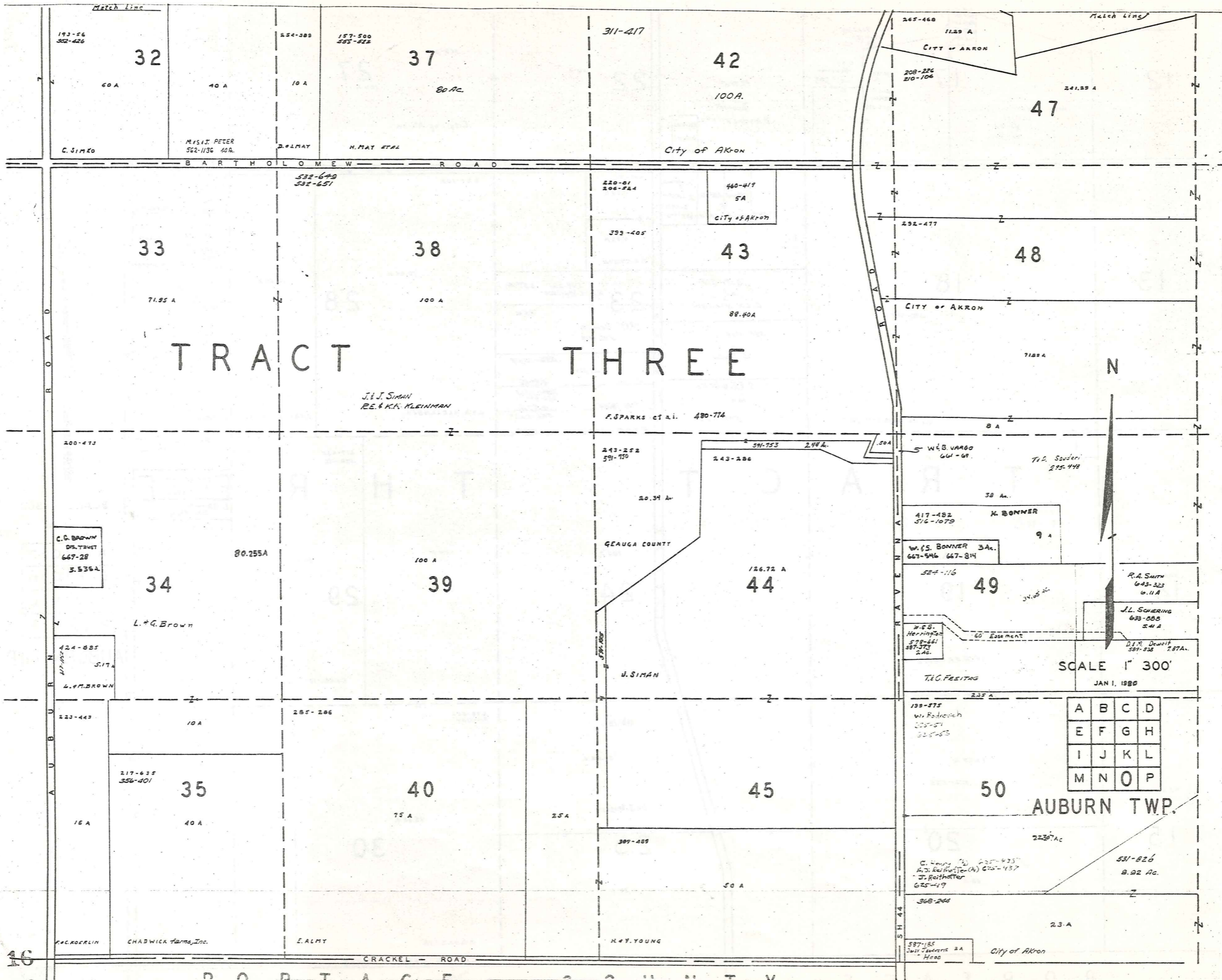
V. FUSON
 3.5 A

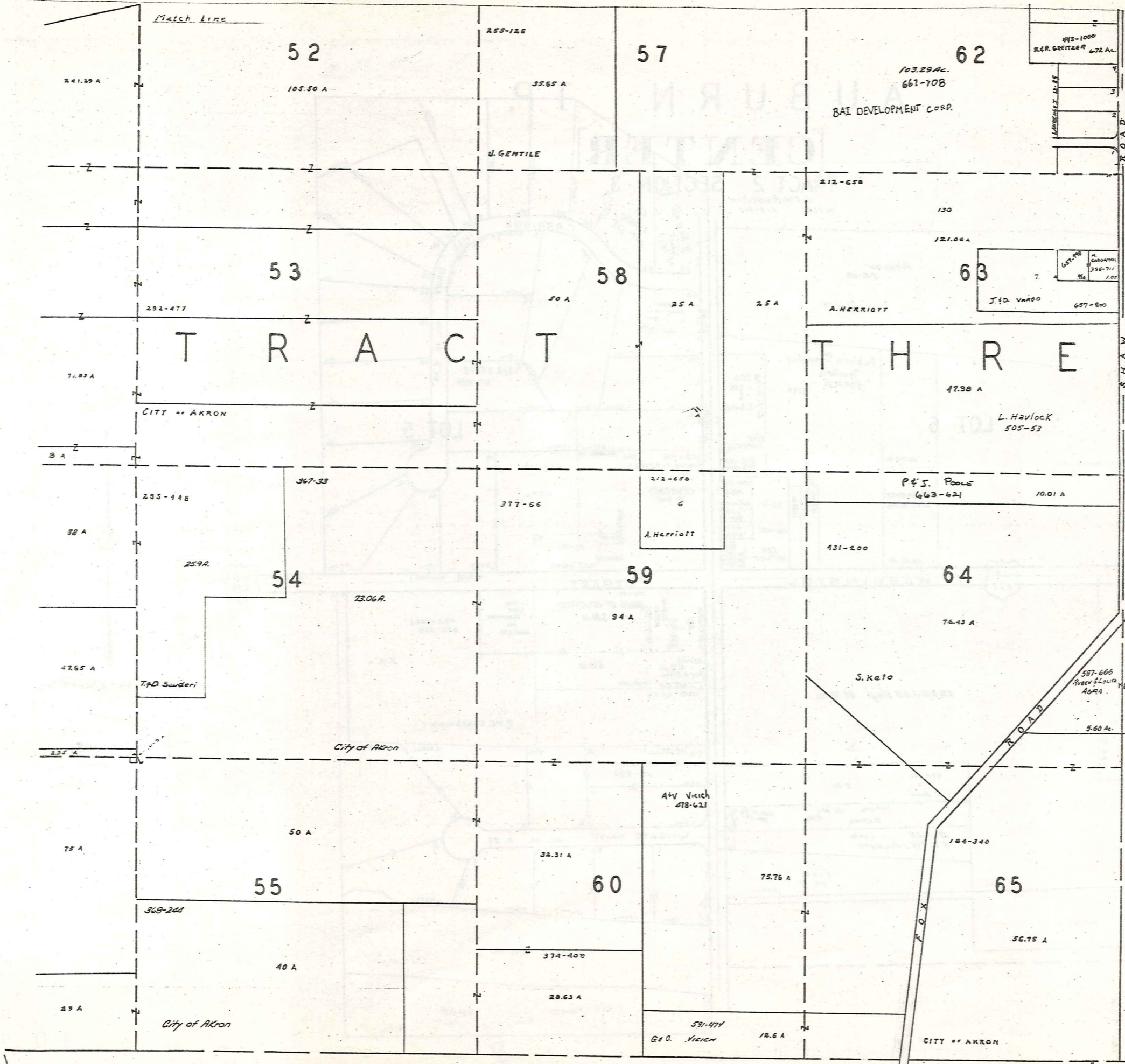
6.25 A
 E.D. McINTOSH
 537-1177

391-251
 2.63 A
 J.S. Almy

25.12 A







Match Line

Match Line

T R A C T

T H R E

T O W N S H I P
T R O Y



SCALE 1" = 300'
JAN 1, 1980

A	B	C	D
E	F	G	H
I	J	K	L
M	N	O	P

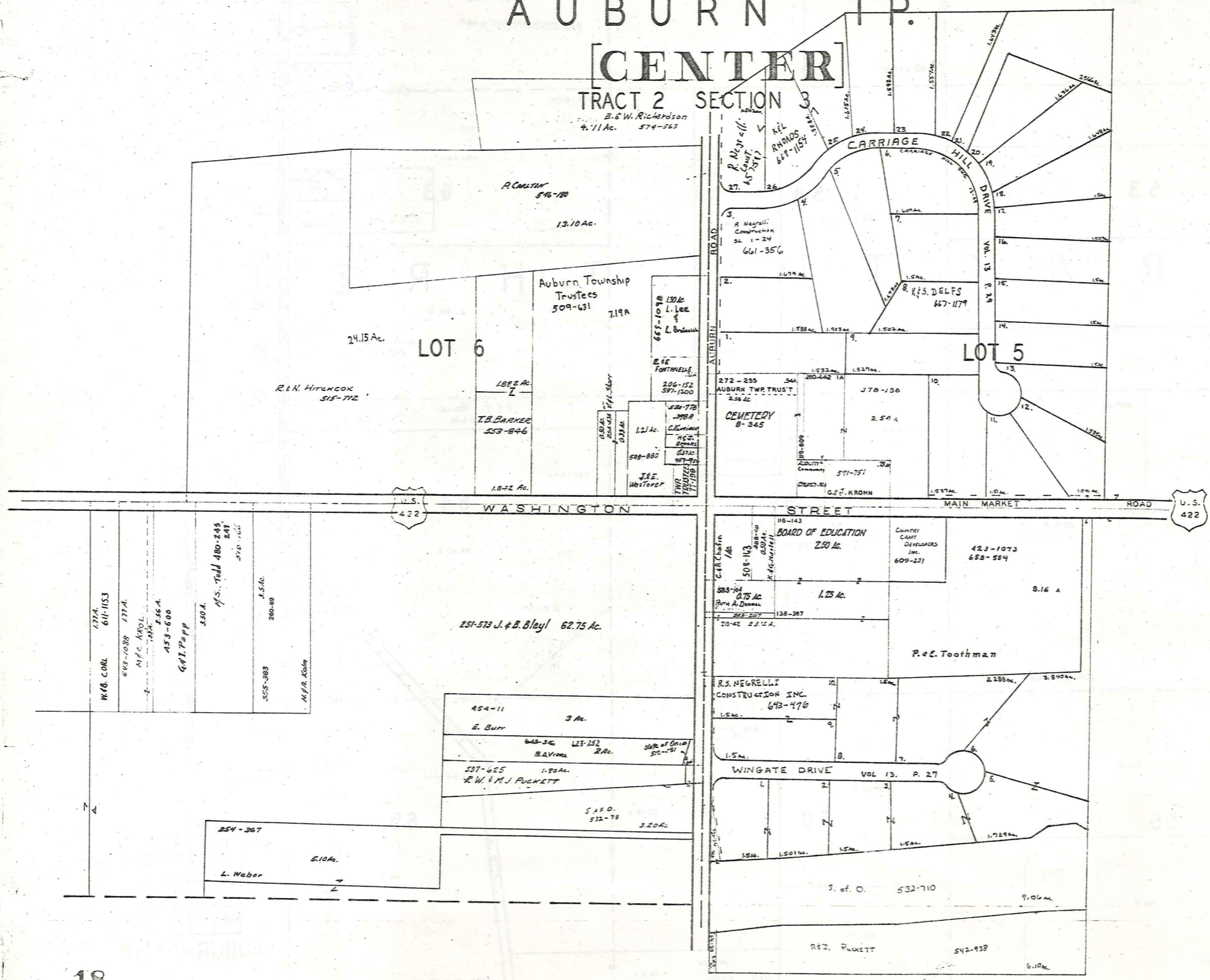
AUBURN TWP.

AUBURN TP.

[CENTER]

TRACT 2 SECTION 3

E. W. Richardson
4.71 Ac. 574-563



SCALE 1IN.=25CH.=165FT.

JAN 1, 1980

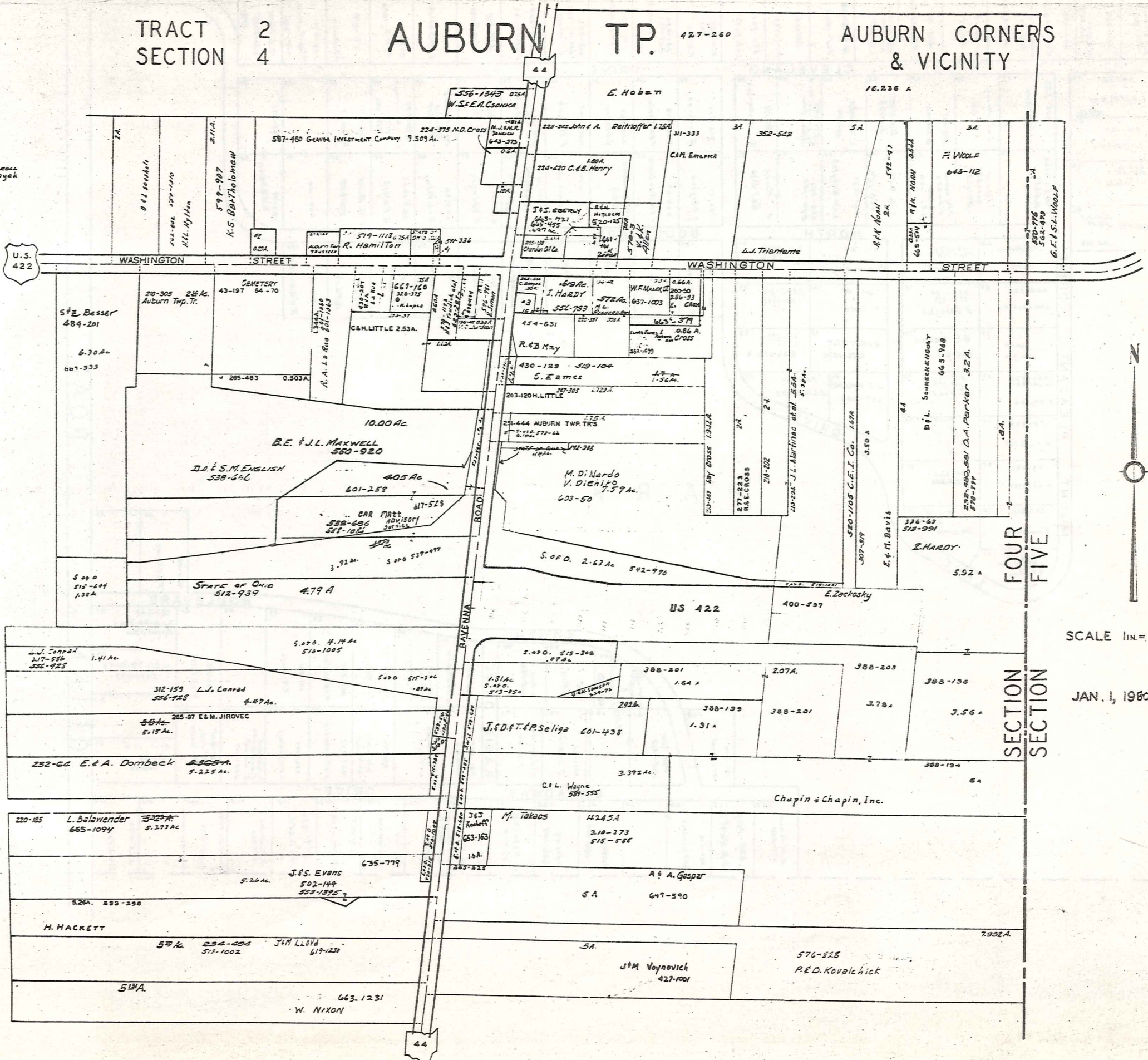
TRACT 2
SECTION 4

AUBURN TP.

427-260

AUBURN CORNERS & VICINITY

#1. 519-79 T.A. Conrad
#2. 519-79 T.A. Conrad
#3. 515-543 C.M. Benyak



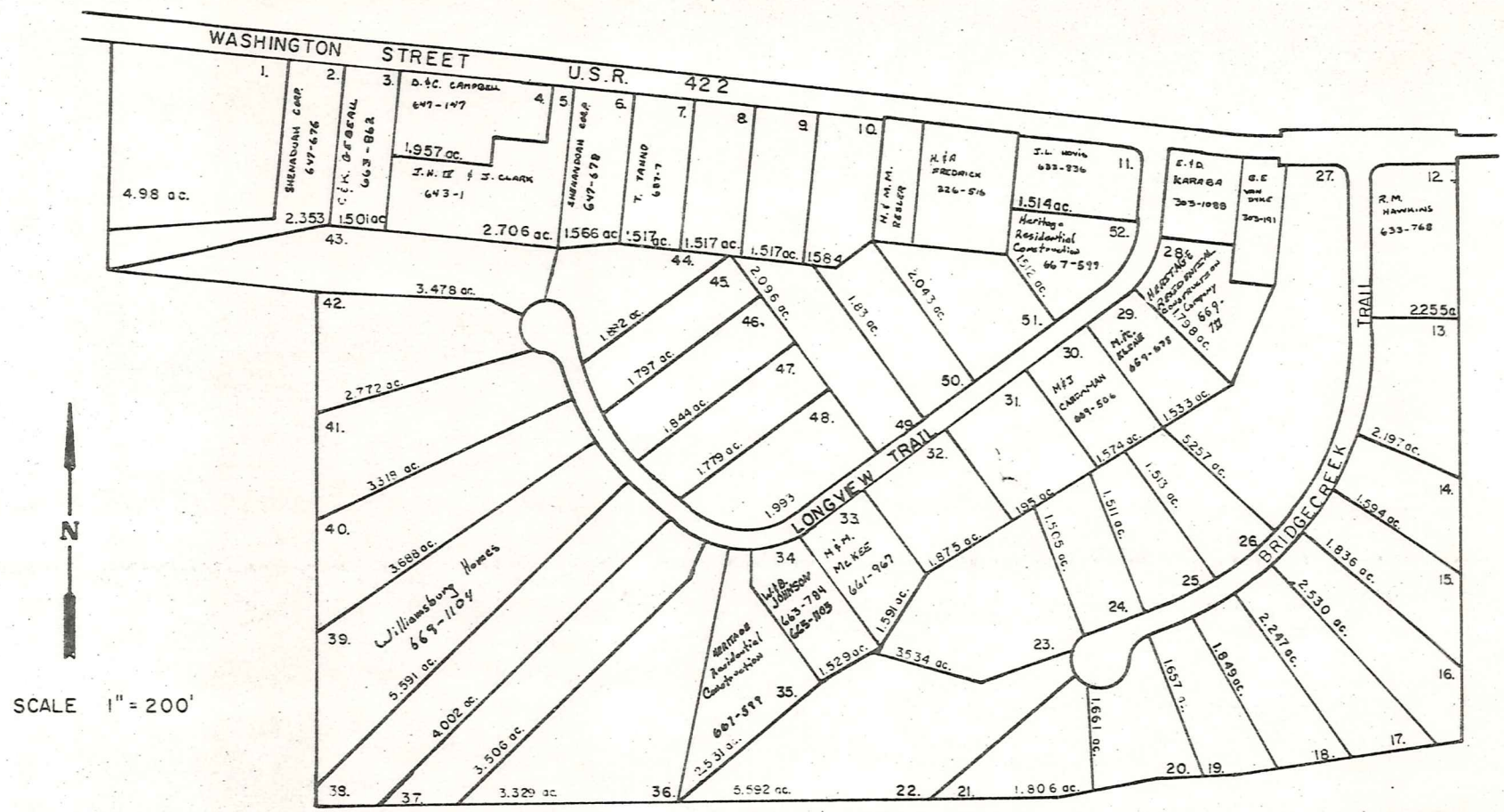
SECTION FOUR
SECTION FIVE

SCALE 1IN. = 25CH. = 165FT.

JAN. 1, 1980



AUBURN
 O.L. 8 SEC. 2
 O.L. 6 SEC. 3 TRACT 2



LONGVIEW FARMS 1 & 2

VOL. 12 PP. 62-64
 VOL. 13 PP. 13-16

Explanation and Use Sheet for Geauga County, Ohio

SAMPLE (PARTIAL) COUNTY INDEX MAP



- Township Boundary
- Township Name
- Village Boundary
- Village Name
- Tract Lot Number
- Street Name
- Acreage
- Deed Book & Page
- Owners Name
- Denotes Continous Ownership

SAMPLE (PARTIAL) MAP PAGE



- Map Page Number
- Village Name
- Village Boundary
- Township Name

SAMPLE (PARTIAL) MUNICIPALITY INDEX MAP



- Street Name
- Village Name
- Township Name

USE OF THE MAP VOLUME

1. LOCATE THE GENERAL AREA OF INTEREST ON THE COUNTY INDEX MAP, ATLAS PAGE 'B', AND NOTE THE MUNICIPALITY NAME (TOWNSHIP OR VILLAGE).
2. REFER TO THE TABLE OF CONTENTS, ATLAS PAGE 'C', AND NOTE THE BEGINNING ATLAS PAGE NUMBER FOR THE MUNICIPALITY OF INTEREST.
3. TURN TO THE PAGE INDICATED. ON THIS PAGE WILL APPEAR AN INDEX MAP FOR THAT MUNICIPALITY.
4. LOCATE THE GENERAL AREA OF INTEREST AND NOTE THE MAP PAGE NUMBER. THIS MAY BE EITHER A LETTER OR A NUMBER.
5. MAP PAGES ARE IN ALPHABETICAL (OR NUMERICAL) SEQUENCE FOLLOWING THE MUNICIPALITY INDEX MAP. FOLLOW SEQUENCE TO THE MAP PAGE INDICATED.
6. LOCATE SPECIFIC PARCEL OF INTEREST AND NOTE THE DESIRED INFORMATION.

NOTE: ON SOME MAPS YOU MAY BE REFERRED TO A DETAIL SHEET SHOWING AN ENLARGEMENT OF THE AREA. THESE MAPS ARE FOUND AT THE END OF THE REGULAR MAP PAGES IN EACH MUNICIPALITY IN EITHER ALPHABETICAL OR NUMERICAL SEQUENCE.

NOTE: CHARDON VILLAGE HAS TITLE SHEETS. TO LOCATE OWNERS NAME, NOTE THE PARCEL NUMBER, REFER TO THE TITLE PAGE FOLLOWING THE MAP OF INTEREST, FOLLOW NUMERICAL SEQUENCE TO THE PARCEL NUMBER OF INTEREST AND NOTE THE DESIRED INFORMATION. IN ALL OTHER MUNICIPALITIES THE OWNERS NAME APPEARS ON THE MAP PAGE.

This book is the property of REAL ESTATE DATA, INC. and is distributed by REDI under a leasing arrangement requiring return to REDI upon termination of the lease. REDI reserves the right to reclaim this book if found in the possession of any firm or person where possession was obtained through any unauthorized source.